



Cambridge International AS & A Level

GEOGRAPHY

9696/43

Paper 4 Advanced Human Geography Options

May/June 2023

INSERT

1 hour 30 minutes

INFORMATION

- This insert contains all the resources referred to in the questions.
- You may annotate this insert and use the blank spaces for planning. **Do not write your answers** on the insert.



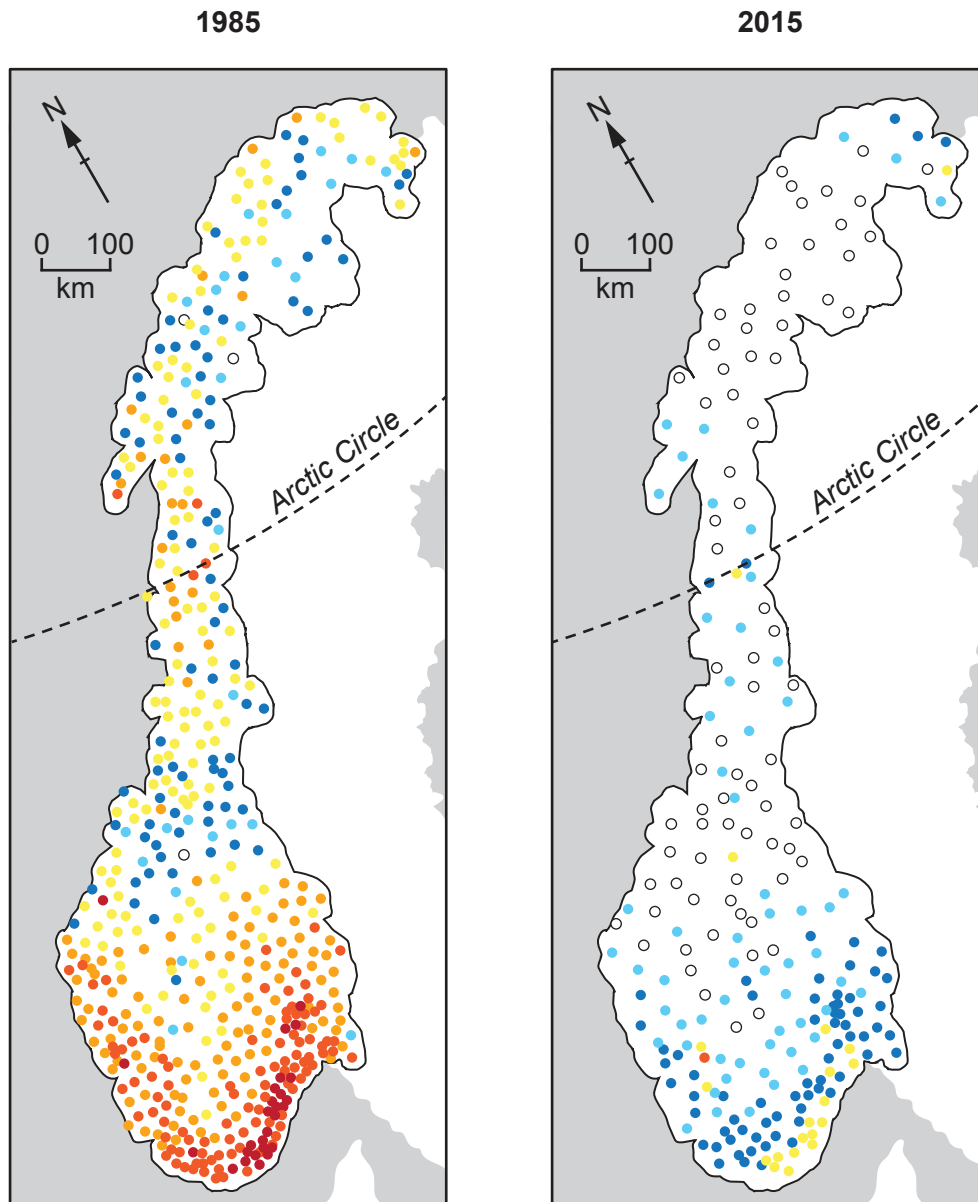
This document has **8** pages. Any blank pages are indicated.

Fig. 1.1 for Question 1
Percentage of employment in the informal sector of manufacturing and services, 2016

Content removed due to copyright restrictions.

Fig. 4.1 for Question 4

Concentration of lead (Pb)* in moss in Norway, an HIC in Europe, 1985 and 2015



* lead (Pb) is a heavy metal with high toxicity that causes harmful effects on humans and the environment

Key

lead (Pb) concentration ($\mu\text{g/g}$)

- 50–100
- 20–49
- 10–19
- 5–9
- 3–4
- 1–2
- less than 1

Fig. 7.1 for Question 7
Hotel construction in Turkey, an MIC in Eurasia

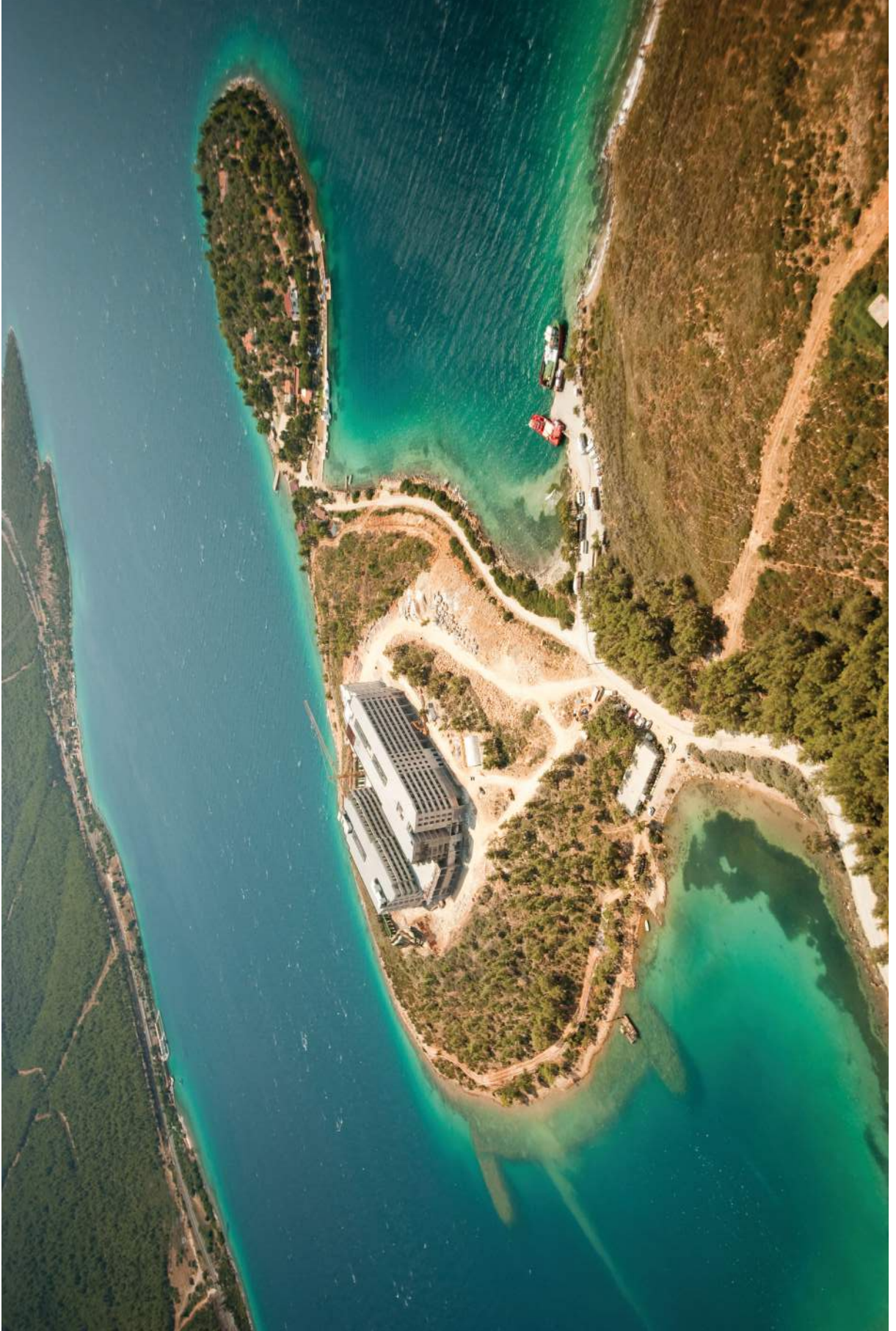
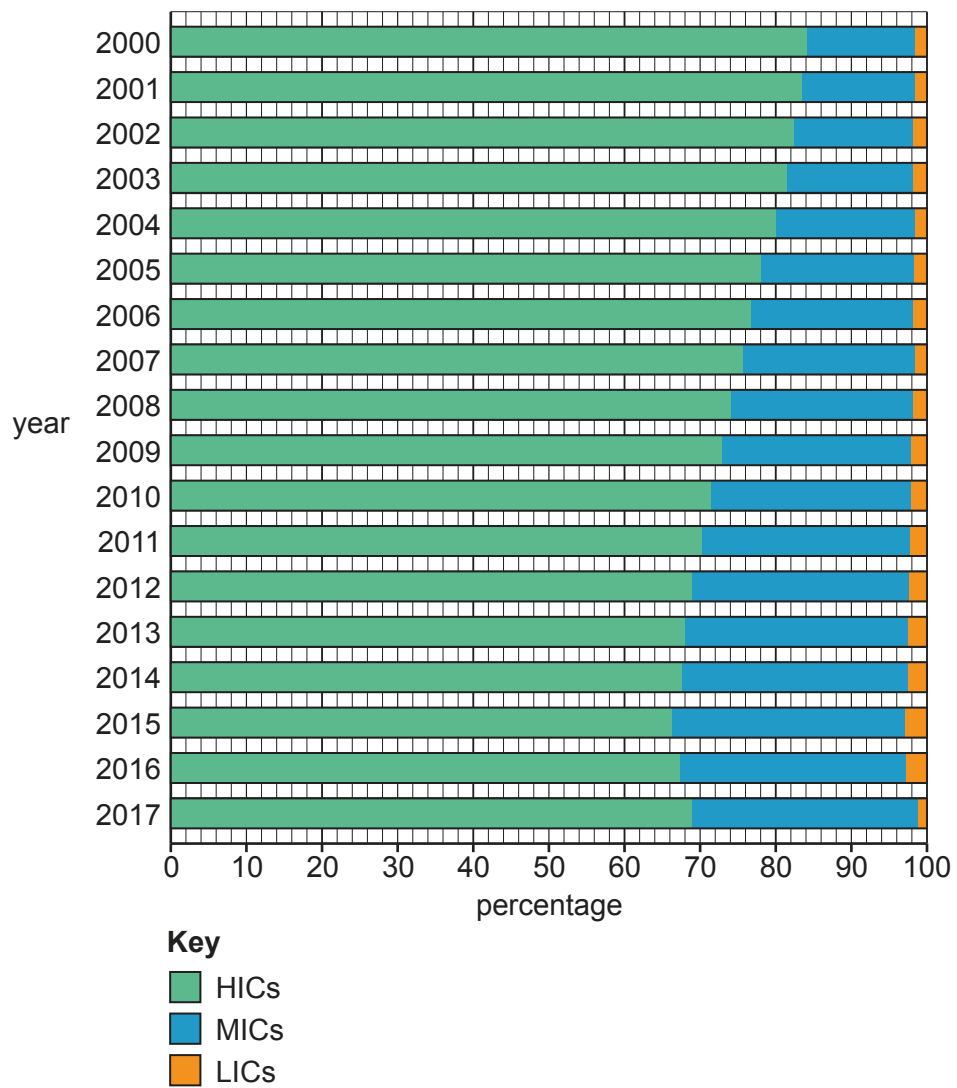


Fig. 10.1 for Question 10

Share of manufactured goods in global export markets for different levels of development, 2000–17



BLANK PAGE

The boundaries and names shown, the designations used and the presentation of material on any maps contained in this question paper/insert do not imply official endorsement or acceptance by Cambridge Assessment International Education concerning the legal status of any country, territory, or area or any of its authorities, or of the delimitation of its frontiers or boundaries.

Permission to reproduce items where third-party owned material protected by copyright is included has been sought and cleared where possible. Every reasonable effort has been made by the publisher (UCLES) to trace copyright holders, but if any items requiring clearance have unwittingly been included, the publisher will be pleased to make amends at the earliest possible opportunity.

To avoid the issue of disclosure of answer-related information to candidates, all copyright acknowledgements are reproduced online in the Cambridge Assessment International Education Copyright Acknowledgements Booklet. This is produced for each series of examinations and is freely available to download at www.cambridgeinternational.org after the live examination series.

Cambridge Assessment International Education is part of Cambridge Assessment. Cambridge Assessment is the brand name of the University of Cambridge Local Examinations Syndicate (UCLES), which is a department of the University of Cambridge.